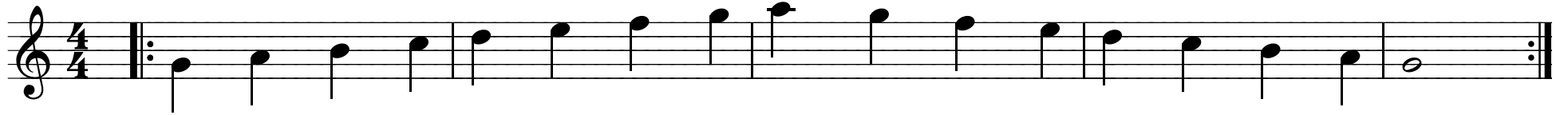
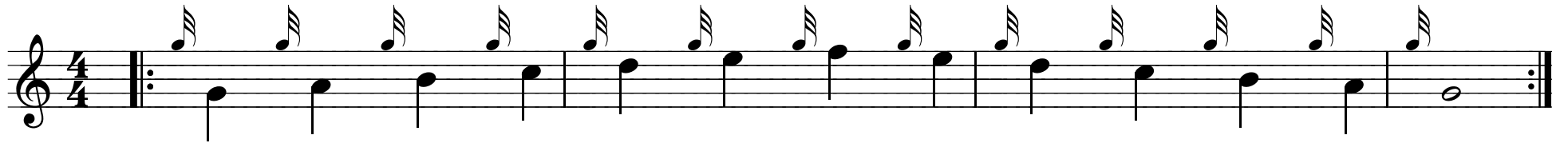


Daily Warmup

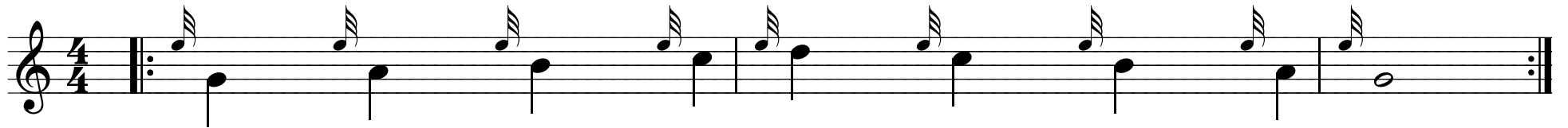
Scale



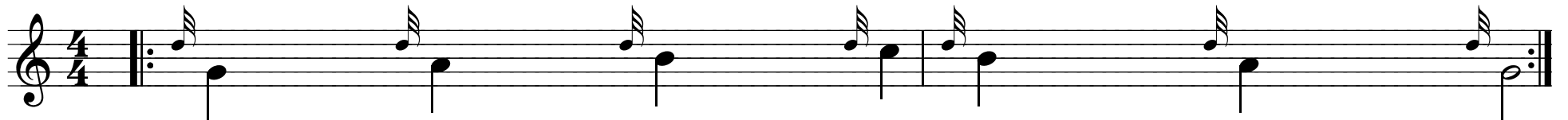
G Gracenote Scale



E Gracenote Scale



D Gracenote Scale



G-D-E's

Musical notation for the G-D-E's exercise in 6/8 time. It consists of two staves. The first staff begins with a repeat sign and contains four measures of music. The second staff contains five measures, ending with a repeat sign. The notation features a steady eighth-note bass line and a treble line with eighth-note chords.

D-Throw

Musical notation for the D-Throw exercise in 4/4 time. It consists of four staves. The first staff begins with a repeat sign and contains four measures. The second and third staves each contain eight measures. The fourth staff contains four measures, ending with a repeat sign. The notation features a steady eighth-note bass line and a treble line with eighth-note chords.

Doublings

Two staves of musical notation in 4/4 time. The first staff begins with a treble clef and a repeat sign. The melody consists of eighth-note pairs (beamed eighth notes) over a steady bass line of quarter notes. The second staff continues the exercise with similar beamed eighth-note patterns and quarter-note accompaniment, ending with a repeat sign.

Strikes

A single staff of musical notation in 4/4 time. It starts with a treble clef and a repeat sign. The exercise features beamed eighth-note pairs in the upper voice and quarter notes in the lower voice. The second half of the exercise introduces dotted rhythms and eighth-note patterns in the upper voice, while the lower voice continues with quarter notes.

Birls

Two staves of musical notation in 6/4 time. The first staff begins with a treble clef and a repeat sign. The melody is characterized by eighth-note pairs (beamed eighth notes) in the upper voice and quarter notes in the lower voice. The second staff continues the exercise with similar beamed eighth-note patterns and quarter-note accompaniment, ending with a repeat sign.

Tachums

Two staves of musical notation for Tachums in 4/4 time. The first staff begins with a treble clef, a 4/4 time signature, and a repeat sign. The melody consists of eighth notes with stems pointing down, often beamed in pairs. The second staff continues the melody, ending with a double bar line and repeat dots.

Grips

Two staves of musical notation for Grips in 4/4 time. The first staff begins with a treble clef, a 4/4 time signature, and a repeat sign. The melody features eighth notes with stems pointing down, often beamed in pairs, with some notes having stems pointing up. The second staff continues the melody, ending with a double bar line and repeat dots.

Taorluaths

One staff of musical notation for Taorluaths in 4/4 time. It begins with a treble clef, a 4/4 time signature, and a repeat sign. The melody consists of eighth notes with stems pointing down, often beamed in pairs. The staff ends with a double bar line and repeat dots.